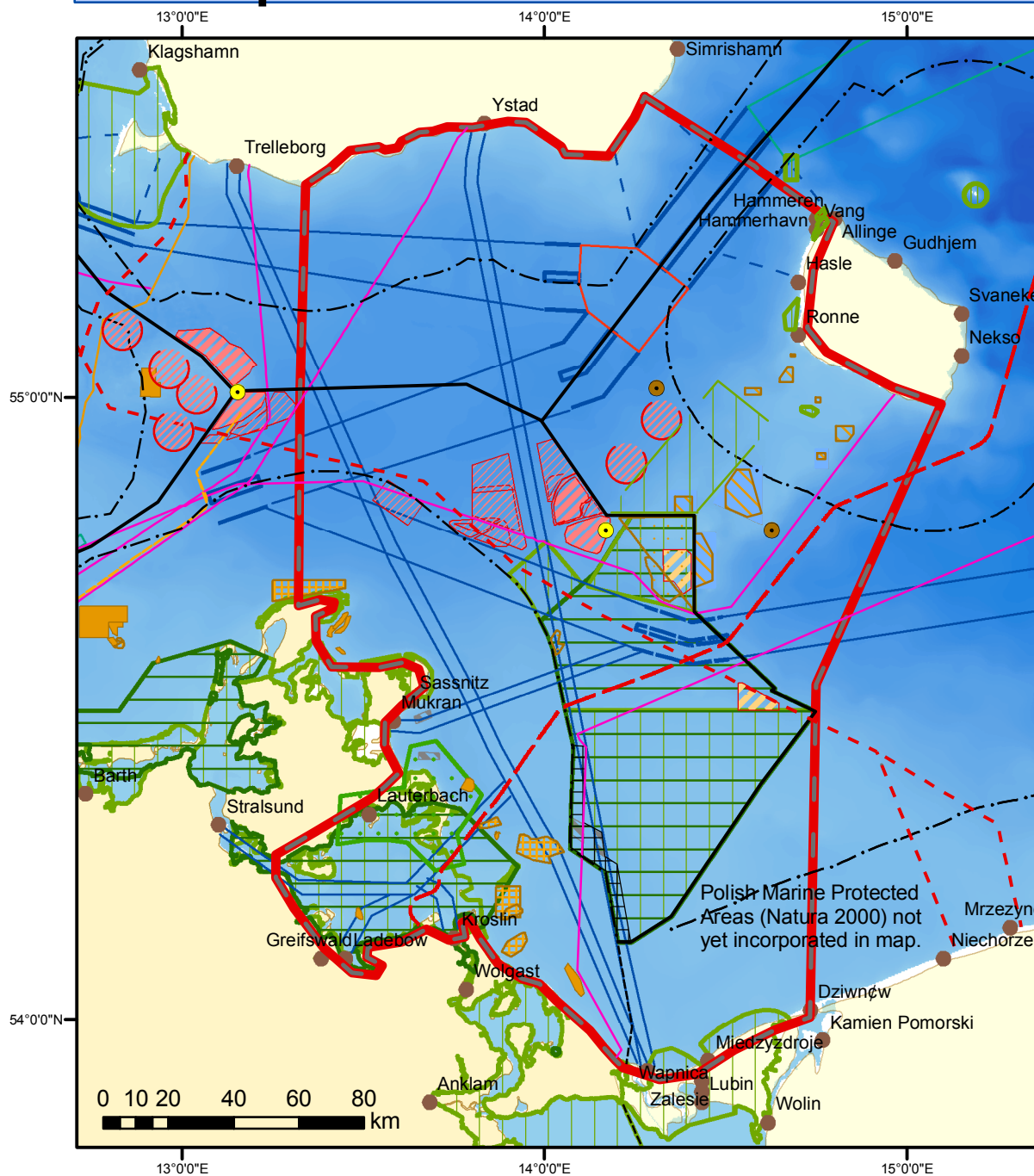


# Pilot Project Area - MSP Pomeranian Bight / Arkona Basin

## - First provisional stocktake -



### Legend

#### Shipping

- Shipping Route
- Traffic Separation Scheme
- TSS/Ship Route, Recommended
- Inshore Traffic Zone
- Deep Water Route
- Precautionary Area

#### Sand and Gravel Extraction

- in Use
- Approved
- Planned
- Proposed
- Presently out of use
- Status unknown

#### Pipelines

- Natural Gas Pipeline, in Use
- Natural Gas Pipeline, Approved
- Natural Gas Pipeline, Planned
- Natural Gas Pipeline, Proposed

#### Offshore Windfarms

- in Use
- Approved
- Planned
- Denied
- Denmark: OWP Project, no fixed outlines yet

#### Platforms

- Oil and Gas Exploration
- Measurement Platform

#### Underwater Cables

- High Voltage Cable, in Use
- High Voltage Cable, Approved
- Data Cable, in Use
- Data Cable, out of Use
- Data Cable, Planned

#### Nature Conservation

- Natura 2000 - SPA Bird Directive
- Natura 2000 - SAC Habitat Directive
- Nat. 2000 - SAC Hab. Dir. - public hearing
- UNESCO Biosphere Reserve

#### Boundaries

- EEZ
  - Territorial Sea
  - Borders
  - Pilot Project Area Pomeranian Bight
  - Northern Approach / Roadstead
- Seaports of Swinoujscie / Szczecin: According to German opinion this area is part of the German EEZ, whereas in relation to Poland no rights or sovereign powers are exercised. According to Polish opinion this area is part of the Polish territorial sea.

Map Projection:  
Mercator (54°N), WGS 84  
BSH / M5280 - 17.02.2010

